

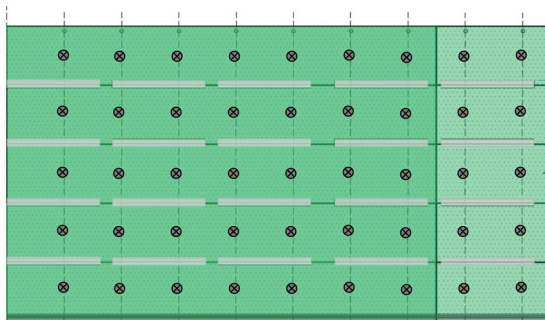


ANNOUNCING NEW, WARRANTY-BACKED
**ARCHITECTURAL WALL PANEL
SOFFIT + ANGLED WALL INSTALLATION**



We've listened to the needs of the market and through extensive research and development we've created a new, warranty-backed soffit and angled wall installation application for Nichiha's architectural wall panels (AWP).

The high-performing installations are straightforward and use the Ultimate Starter Track and Clips and typical framing conditions. For added durability, face fasteners are added at each framing or furring member along the center line of each panel.

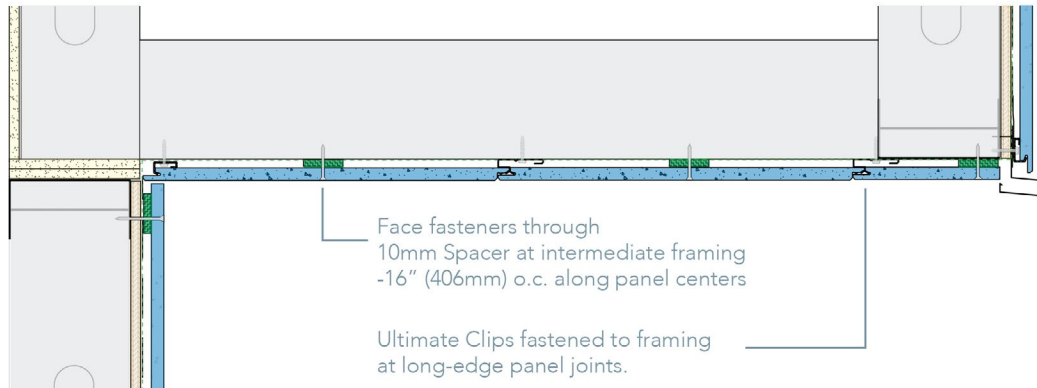


NEED HELP WITH TECHNICAL DESIGNS?

Schedule a [free design review](#) with our team of engineers and architects or email us at technicalservices@nichiha.com.

See next page for more details >

DETAIL SUMMARY



For terminal course/cut panels less than 10" (254mm) in width, the center face fasteners are not needed.

**FULL INSTRUCTIONS ARE AVAILABLE IN THE
[AWP HORIZONTAL INSTALLATION GUIDE](#). See pages 38-41.**

SUMMARY

1. Nichiha AWP3030 or AWP1818 may be used. The long dimension runs perpendicular to framing.
2. Utilize Ultimate Horizontal Starter Track (FA700) and Ultimate Clips with AWP in the normal fashion.
3. Face fasten the centerline of panels at intermediate (field) framing members.
4. Centerline face fasteners: Min. Number 7 or larger screws with a bugle or flat head (min. head diameter 0.255" (6.5mm)) are appropriate for face fastening locations. Fasteners must penetrate framing or furring per the minimum requirements:
 - a. Wood Studs - minimum of 1" (25mm).
 - b. Metal Studs - minimum of 1/2" (13mm). Three threads are needed for effective grab.
5. Angled Walls: Only forward leaning angled walls are acceptable.
6. Panels cut to 10" or less do not require centerline face fastening, only cut edge fastening as is normally required when Clips cannot be used.
7. The Technical Department must review all non-vertical wall applications.
8. Applications following the instructions will maintain the standard Product and Finish Warranties.